



Clinical Integration and Collaboration

Lorraine Puleo, MS, RN
Nurse Case Manager

Jeanette Altavela, PharmD, BCPS
Director of Care Management and Pharmacy Services



Collaborative Efforts to Improve Standards of Care



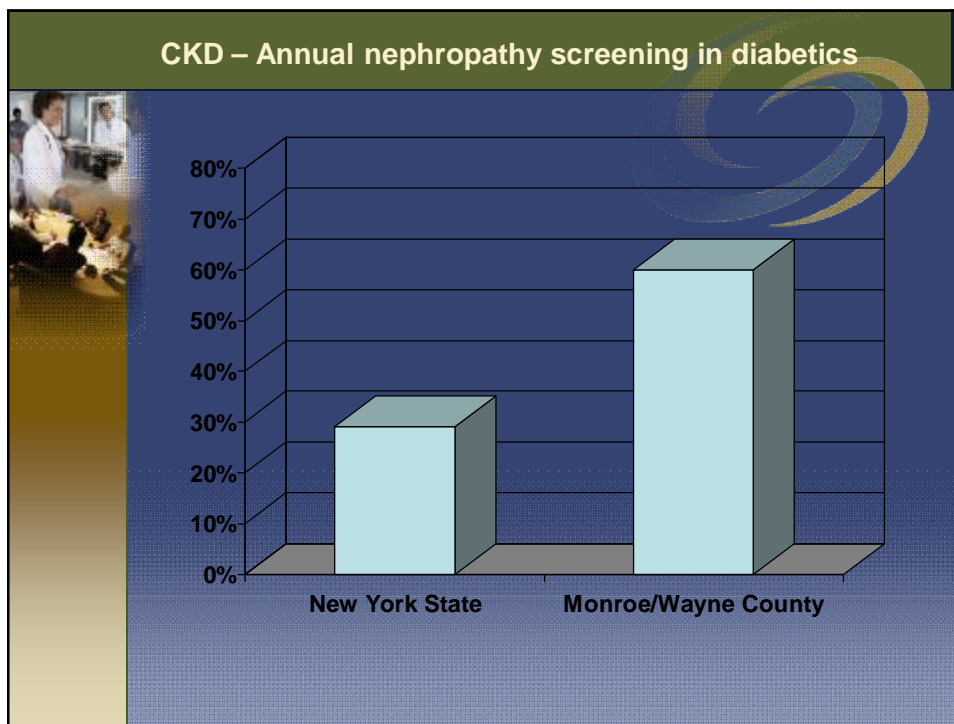
GRIPACONnect is working in collaboration with IPRO and the Center for Medicare/Medicaid Services (CMS) on measurement outcomes in the following areas:

Chronic Kidney Disease

- ✓ Nephropathy screening
- ✓ ACEI/ARB usage
- ✓ Fistula first

Other medication related initiatives

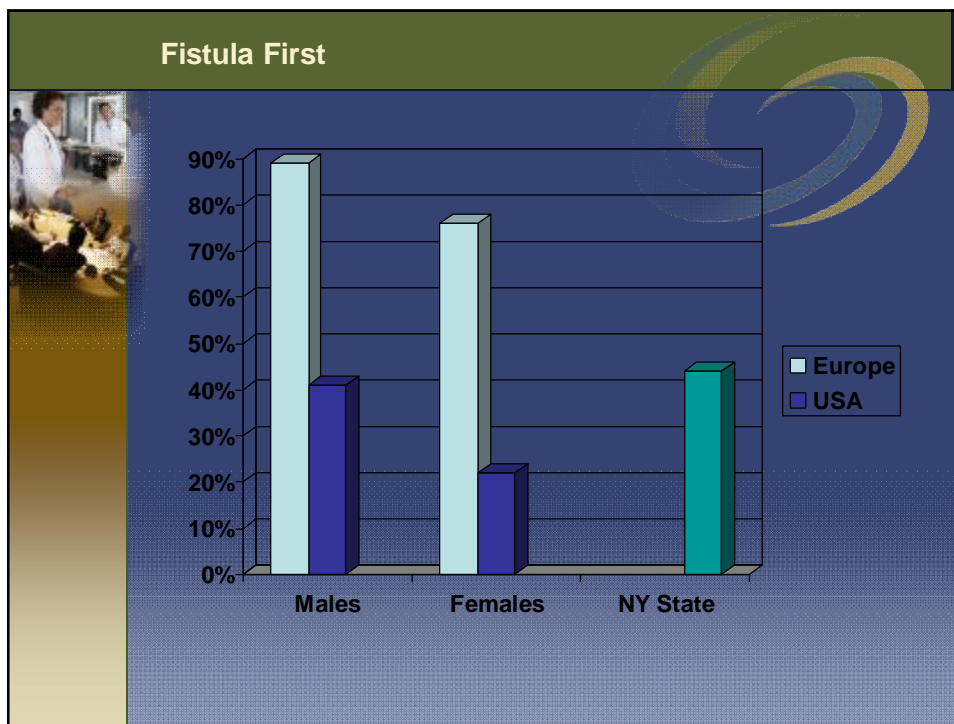
- ✓ INR Monitoring - Warfarin/Anti-infective
- ✓ Avoiding Anticholinergics in Alzheimers



CKD – ACEI/ARB use

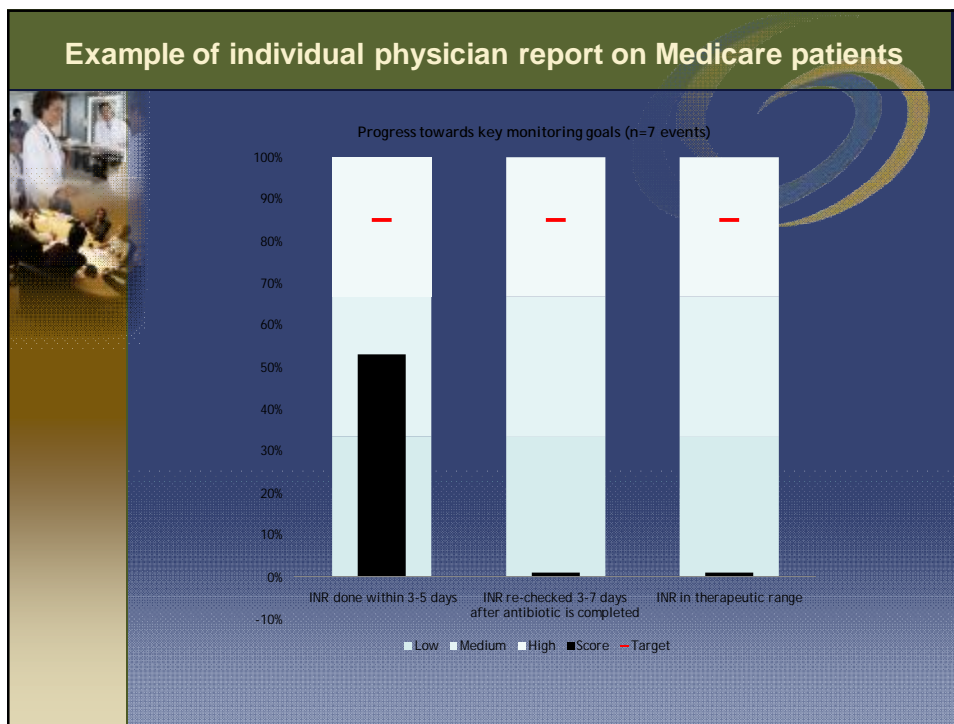
83% of Monroe/Wayne county Medicare population with Diabetes + HTN + CKD are on an ACEI/ARB

An illustration of a medical device, specifically a blood pressure cuff and a stethoscope, positioned in the bottom right corner of the slide.



Warfarin Interactions

Goal: Ensure all patients who are on warfarin and who receive a prescription for an interacting anti-infective will have an INR evaluated within 3-5 days of having the antibiotic prescribed, and again 10-14 days after treatment ends.



Example of "secure message" on GRIPA Connect

Secure Message Center

Please Note: Messages will be deleted from your Inbox after 30 days. Referral messages must be deleted manually. They do not auto delete.

Write: Text Message | Show: All Message Types

From	Sent	From	About (DOB)	Topic
Alvarez, Jeanette	08/26/10 08:55AM	Alvarez, Jeanette	DOB: 6/24/1950	Warfarin - Anti-Infective - DRG
Alvarez, Jeanette	08/26/10 09:49AM	Alvarez, Jeanette	DOB: 6/24/1950	Warfarin - Anti-Infective - DRG

Messages 1 to 2 of 2

To: Alvarez RPN, Jeanette
 Topic: Warfarin - Anti-Infective - DRG Monitoring
 Priority: NORMAL

Dr. Jones and Dr. Maier
 David appears to be taking warfarin and had an anti-infective (ciprofloxacin) prescribed by (Dr. Maier) on 8/23/2010. Please assure this patient has his INR drawn within 2-5 days of starting the anti-infective. (even if you have proactively adjusted the warfarin dose).
 Jeanette Alvarez, PharmD, BCPS

[View & Delete Message](#)